



Painter Street, Thetford, IP24 1AR

Guide Price £150,000

TO BE SOLD BY MODERN METHOD OF AUCTION

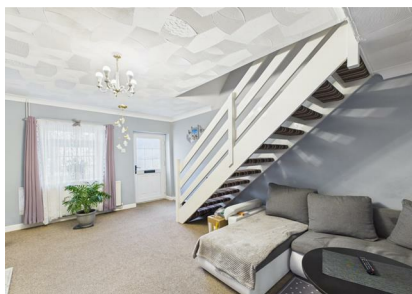
Nestled on the charming Painter Street in Thetford, this delightful end terrace cottage presents an excellent opportunity for first-time buyers and investors alike. The property boasts two well-proportioned bedrooms and a comfortable reception room, providing ample space for relaxation and entertaining.

The well-presented brick and flint exterior adds character to the home, while the fully enclosed rear garden offers a private outdoor space, perfect for enjoying sunny days or hosting gatherings. With gas central heating and UPVC windows throughout, the property ensures warmth and energy efficiency, making it a practical choice for modern living.

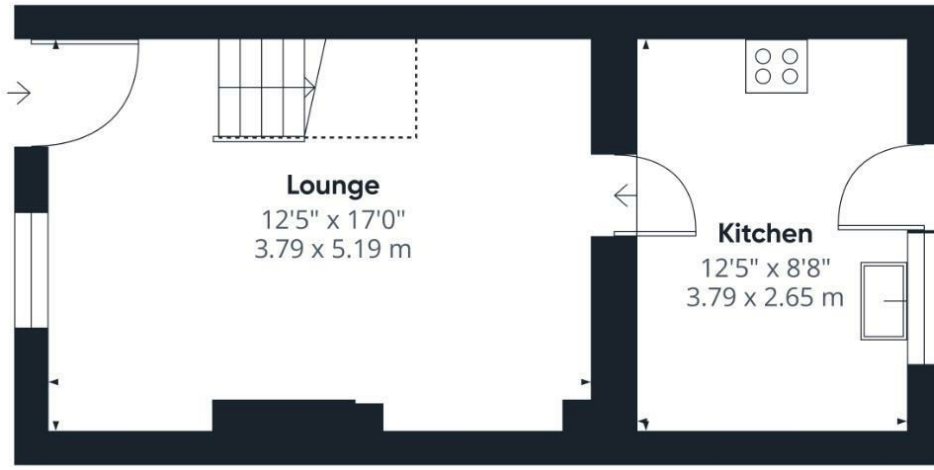
Conveniently located within walking distance of both the bus and train stations, this home provides easy access to local amenities and transport links, enhancing its appeal for those commuting or exploring the surrounding areas. Additionally, being a chain-free property simplifies the buying process, allowing for a smoother transition into your new home.

This charming cottage on Painter Street is not just a house; it is a place where memories can be made. Whether you are looking to invest or seeking your first home, this property is a must-see.

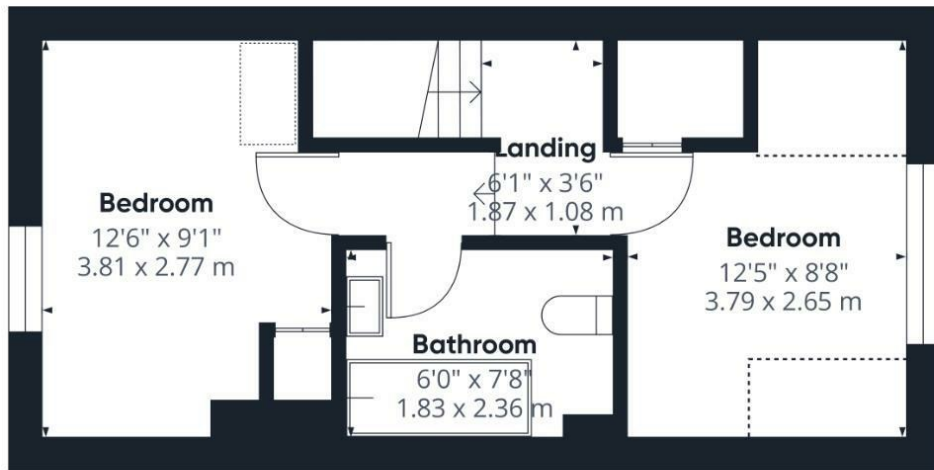
- TO BE SOLD BY MODERN METHOD OF AUCTION
- IDEAL FIRST HOME OR INVESTMENT PURCHASE
- BRICK & FLINT COTTAGE
- TWO BEDROOMS
- OFFERED ON A CHAIN FREE BASIS
- TOWN CENTRE LOCATION
- WALKING DISTANCE TO THETFORD BUS INTERCHANGE
- END TERRACED
- ENCLOSED REAR GARDEN
- VIEWINGS HIGHLY ADVISED



Council Tax Band: A - EPC Rating: null



Ground Floor



Floor 1

Approximate total area⁽¹⁾

606 ft²
56.3 m²

Reduced headroom

.45 ft²
4.2 m²

(1) Excluding balconies and terraces

Reduced headroom
..... Below 5 ft/1.5 m

Calculations reference the RICS IPMS 3C standard. Measurements are approximate and not to scale. This floor plan is intended for illustration only.

GIRAFFE 360

